



SAMPLE POINTS

THREE CRITERIA SAMPLE POINT	GPS COORDINATES LAT/LONG
⑩	39.22929N/-121.40350W
⑪	39.22995N/-121.40050W


WATERS OF U.S. / TEMPORARY IMPACTS
 W-2 (Data Point 10): Seasonal Drainage – 0.003 acres
 Temporary Impacts at W-2: 0.001 acres
 W-1 (Data Point 11): Emergent Wetlands – 0.11 acres
 Temporary Impacts at W-1: 0.011 acres


WATERS OF U.S. / PERMANENT IMPACTS
 R-1 : 0.09 acres (Open Water)
 Permanent Impacts at R-1: 0.003 acres


Legend

USACE Wetland Impact Map
Dry Creek Recapture Project

Conducted By: **MARCUS H. BOLE & ASSOCIATES,**
 PHONE: 530-633-0117, Property located within Sections 21,
 22, 28, and 29; T 16N, R 5E, Mt Diablo BM.
 March 12, 2013

CONSTRUCTION CORRIDOR
 30 FEET IN WIDTH
 (WETLAND STUDY AREA) 

DELINEATED WOUS
 OPEN WATER 

SEASONAL SWALE/DRAINAGE 



SCALE: 1" = 66'

66 132



W-3 Seasonal Creek (with emergent wetlands)

Wetland Study Area

PIPELINE ALIGNMENT

FRENCH DRY CREEK

SAMPLE POINTS

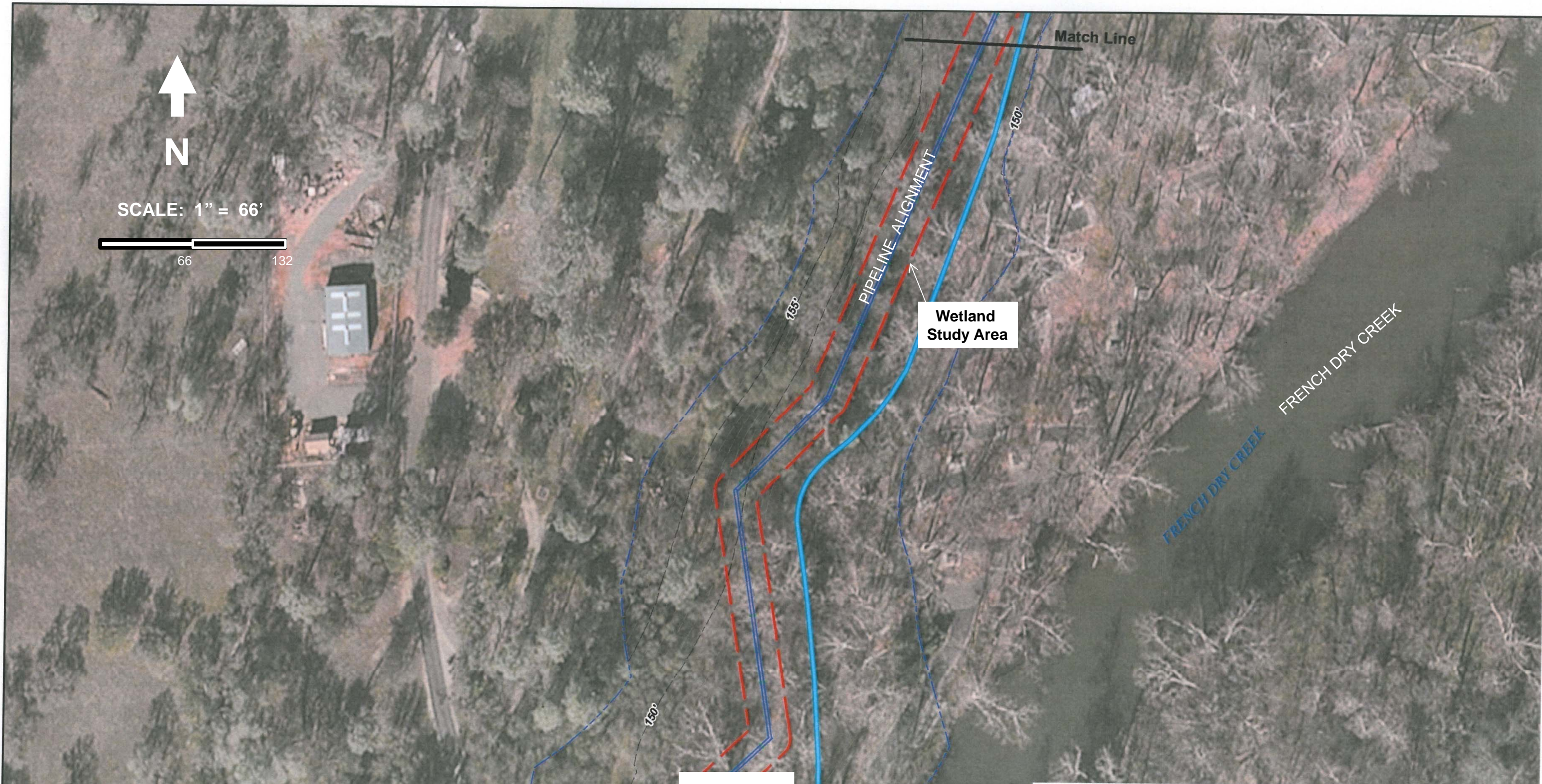
THREE CRITERIA SAMPLE POINT	GPS COORDINATES LAT/LONG
9	39.22772N/-121.40632W

WATERS OF U.S. / TEMPORARY IMPACTS
 W-3 (Data Point 9): Seasonal Creek – 0.03 acres
 Temporary Impacts at W-3: 0.003 acres

Legend
USACE Wetland Impact Map
Dry Creek Recapture Project

Conducted By: **MARCUS H. BOLE & ASSOCIATES**, PHONE: 530-633-0117
 Property located within Sections 21, 22, 28, and 29; T 16N, R 5E, Mt Diablo BM.
 March 12, 2013




- CONSTRUCTION CORRIDOR 30 FEET IN WIDTH
- DELINEATED WOUS
- SWALE/DRAINAGE

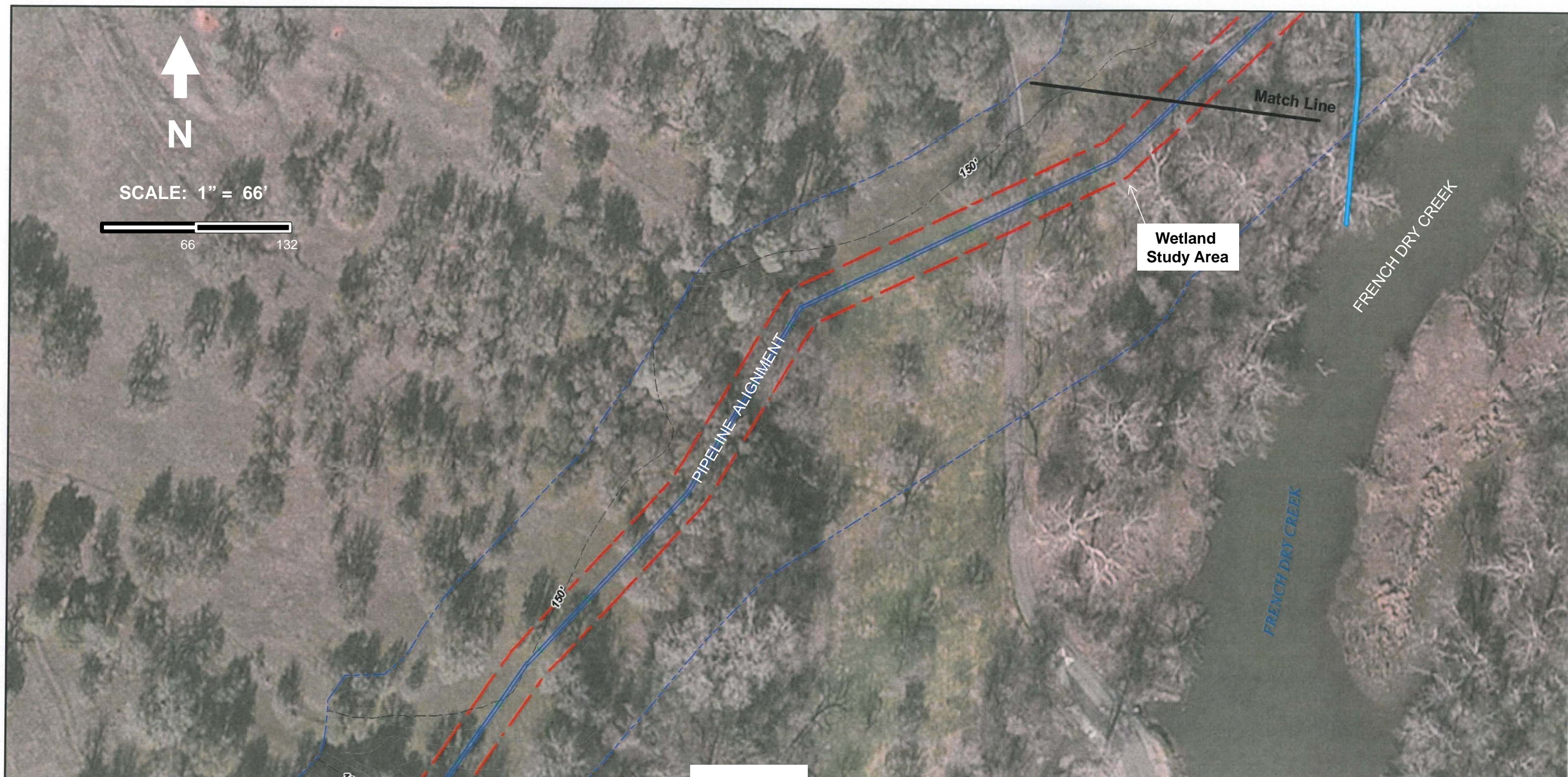


WATERS OF U.S. / IMPACTS
None on this display

Legend
USACE Wetland Impact Map
Dry Creek Recapture Project

Conducted By: **MARCUS H. BOLE & ASSOCIATES**, PHONE: 530-633-0117
Property located within Sections 21, 22, 28, and 29; T 16N, R 5E, Mt Diablo BM.
March 12, 2013

- CONSTRUCTION CORRIDOR 30 FEET IN WIDTH 
- DELINEATED WOUS 
- SWALE/DRAINAGE 






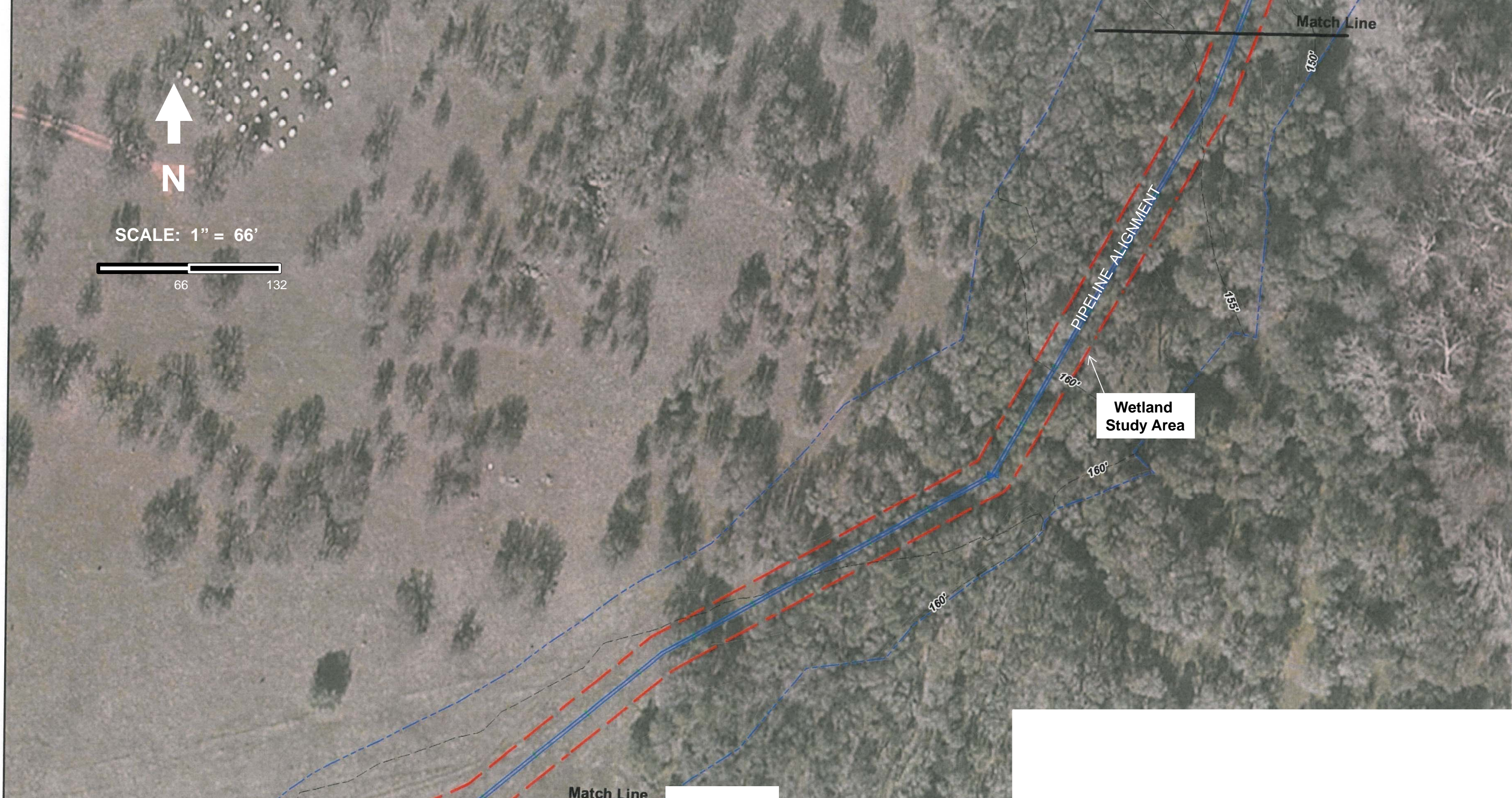
WATERS OF U.S. /IMPACTS
None on this display

Legend

**USACE Wetland Impact Map
Dry Creek Recapture Project**

Conducted By: **MARCUS H. BOLE & ASSOCIATES**, PHONE: 530-633-0117
Property located within Sections 21, 22, 28, and 29; T 16N, R 5E, Mt Diablo BM.
March 12, 2013

- CONSTRUCTION CORRIDOR 30 FEET IN WIDTH 
- DELINEATED WOUS 
- SWALE/DRAINAGE 






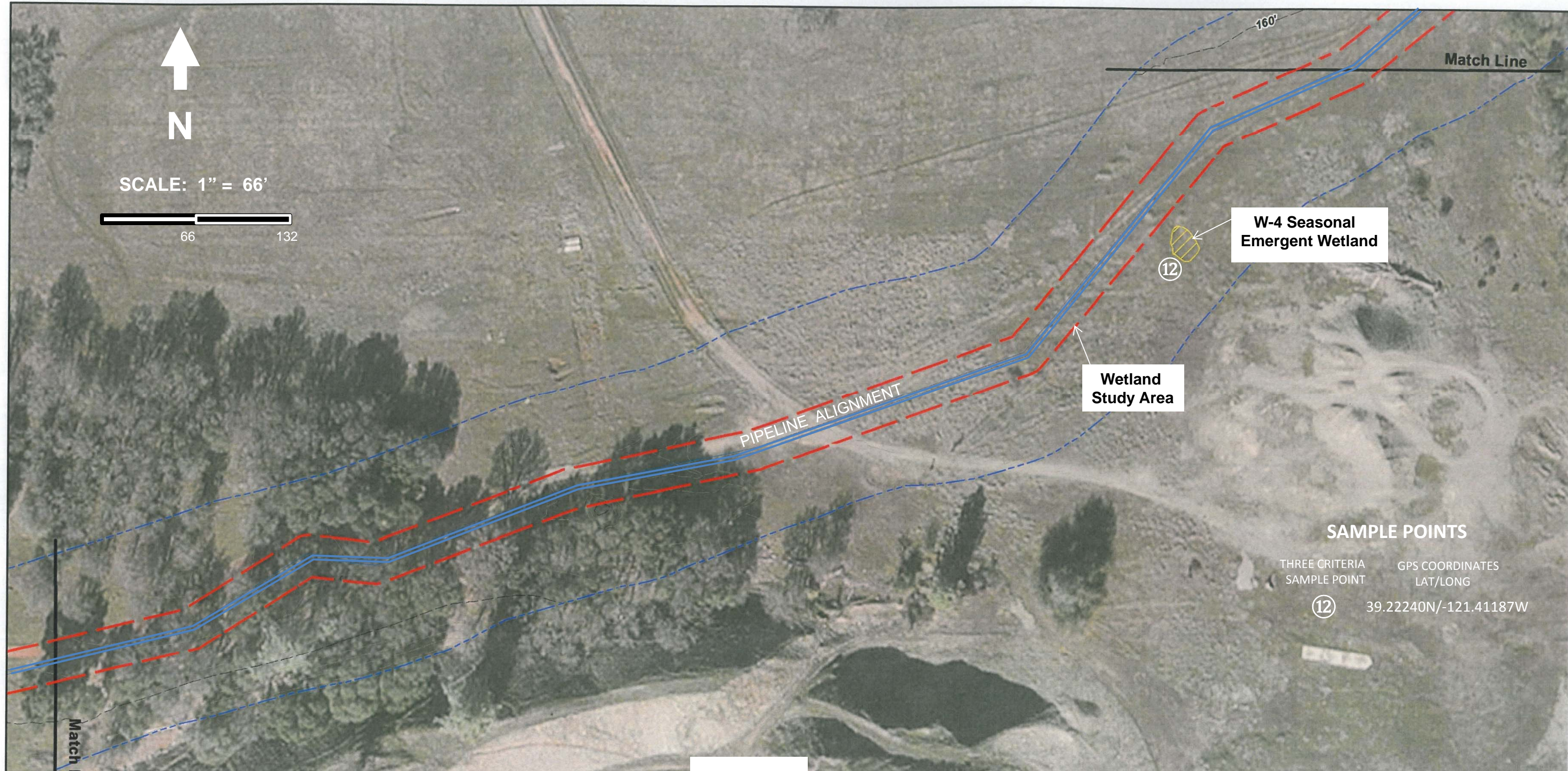
WATERS OF U.S. /IMPACTS
None on this display

Legend

**USACE Wetland Impact Map
Dry Creek Recapture Project**

Conducted By: **MARCUS H. BOLE & ASSOCIATES**, PHONE: 530-633-0117
Property located within Sections 21, 22, 28, and 29; T 16N, R 5E, Mt Diablo BM.
March 12, 2013

- CONSTRUCTION CORRIDOR 30 FEET IN WIDTH 
- DELINEATED WOUS 
- SWALE/DRAINAGE 






WATERS OF U.S. / IMPACTS

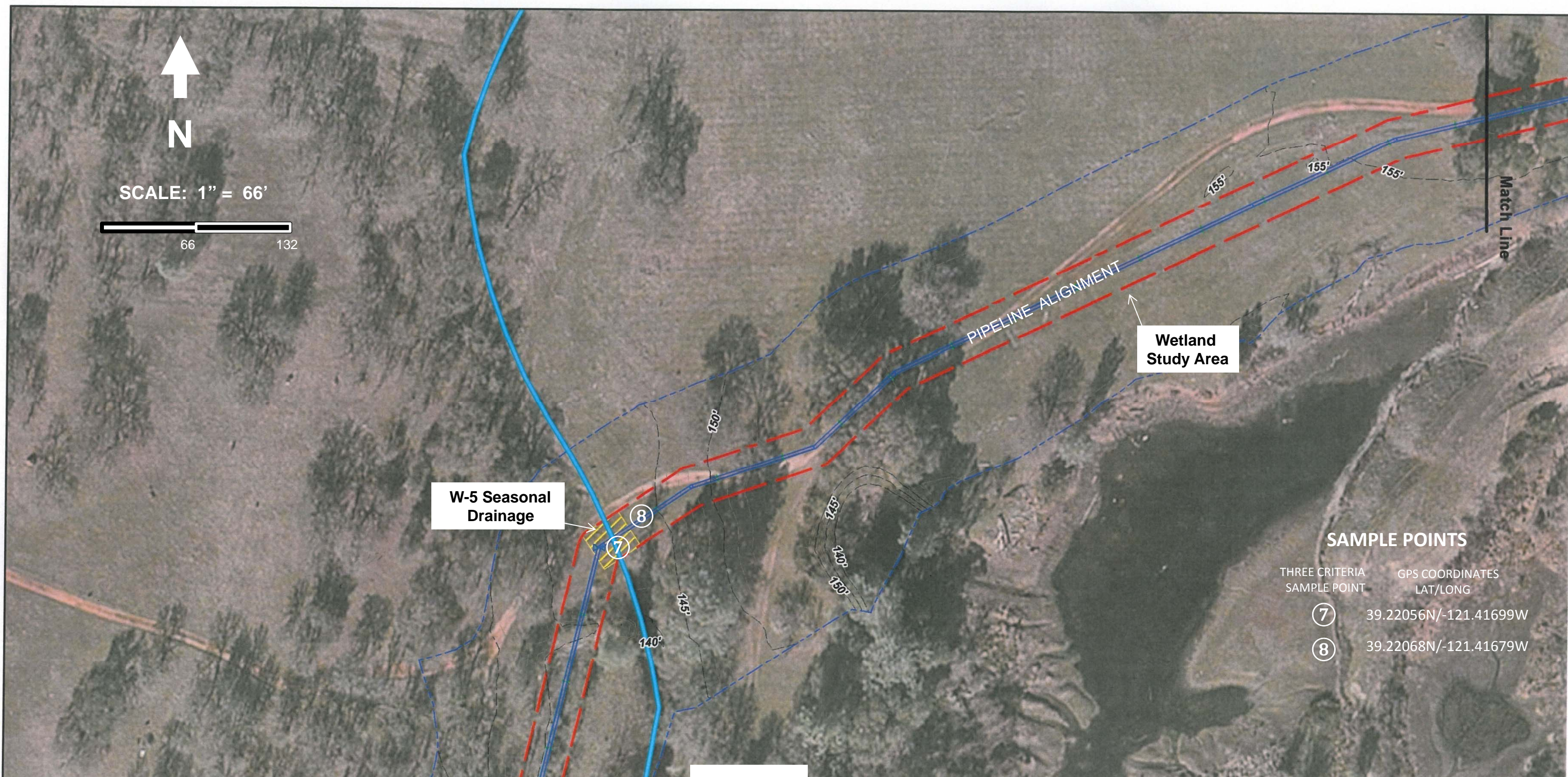
W-4 (Data Point 12): Seasonal Emergent Wetland – 0.005 acres
 NO IMPACT

Legend

**USACE Wetland Impact Map
 Dry Creek Recapture Project**

Conducted By: **MARCUS H. BOLE & ASSOCIATES**, PHONE: 530-633-0117
 Property located within Sections 21, 22, 28, and 29; T 16N, R 5E, Mt Diablo BM.
 March 12, 2013

- CONSTRUCTION CORRIDOR 30 FEET IN WIDTH 
- DELINEATED WOUS 
- SWALE/DRAINAGE 



Wetland Study Area

W-5 Seasonal Drainage

PIPELINE ALIGNMENT

Match Line

SCALE: 1" = 66'



SAMPLE POINTS

THREE CRITERIA SAMPLE POINT	GPS COORDINATES LAT/LONG
7	39.22056N/-121.41699W
8	39.22068N/-121.41679W

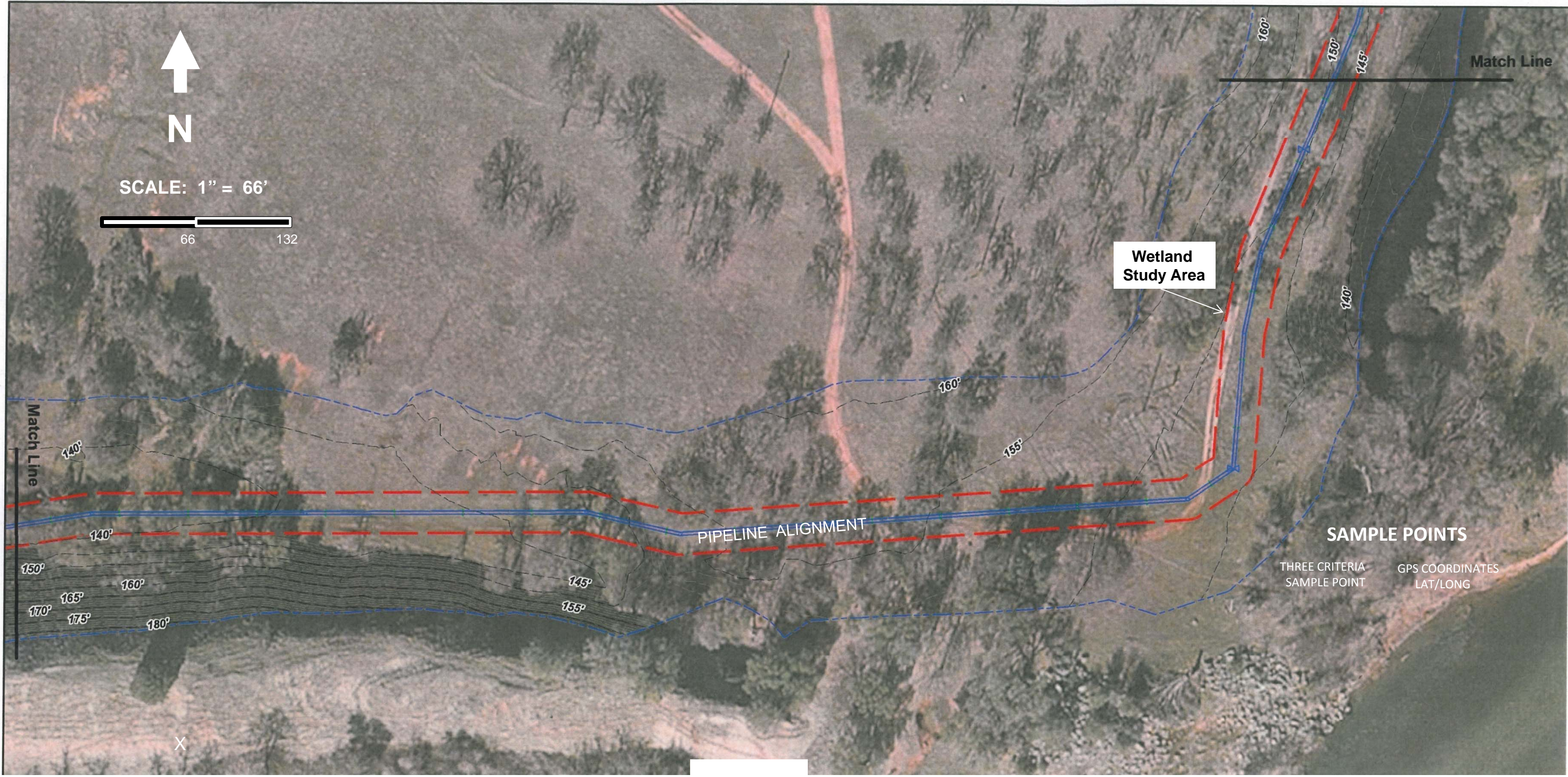
WATERS OF U.S. / TEMPORARY IMPACTS
 W-5 (Data Point 7): Seasonal Drainage – 0.02 acres
 Temporary Impacts at W-5: 0.002 acres

Legend

**USACE Wetland Impact Map
 Dry Creek Recapture Project**

Conducted By: **MARCUS H. BOLE & ASSOCIATES**, PHONE: 530-633-0117
 Property located within Sections 21, 22, 28, and 29; T 16N, R 5E, Mt Diablo BM.
 March 12, 2013




- CONSTRUCTION CORRIDOR 30 FEET IN WIDTH
- DELINEATED WOUS
- SWALE/DRAINAGE

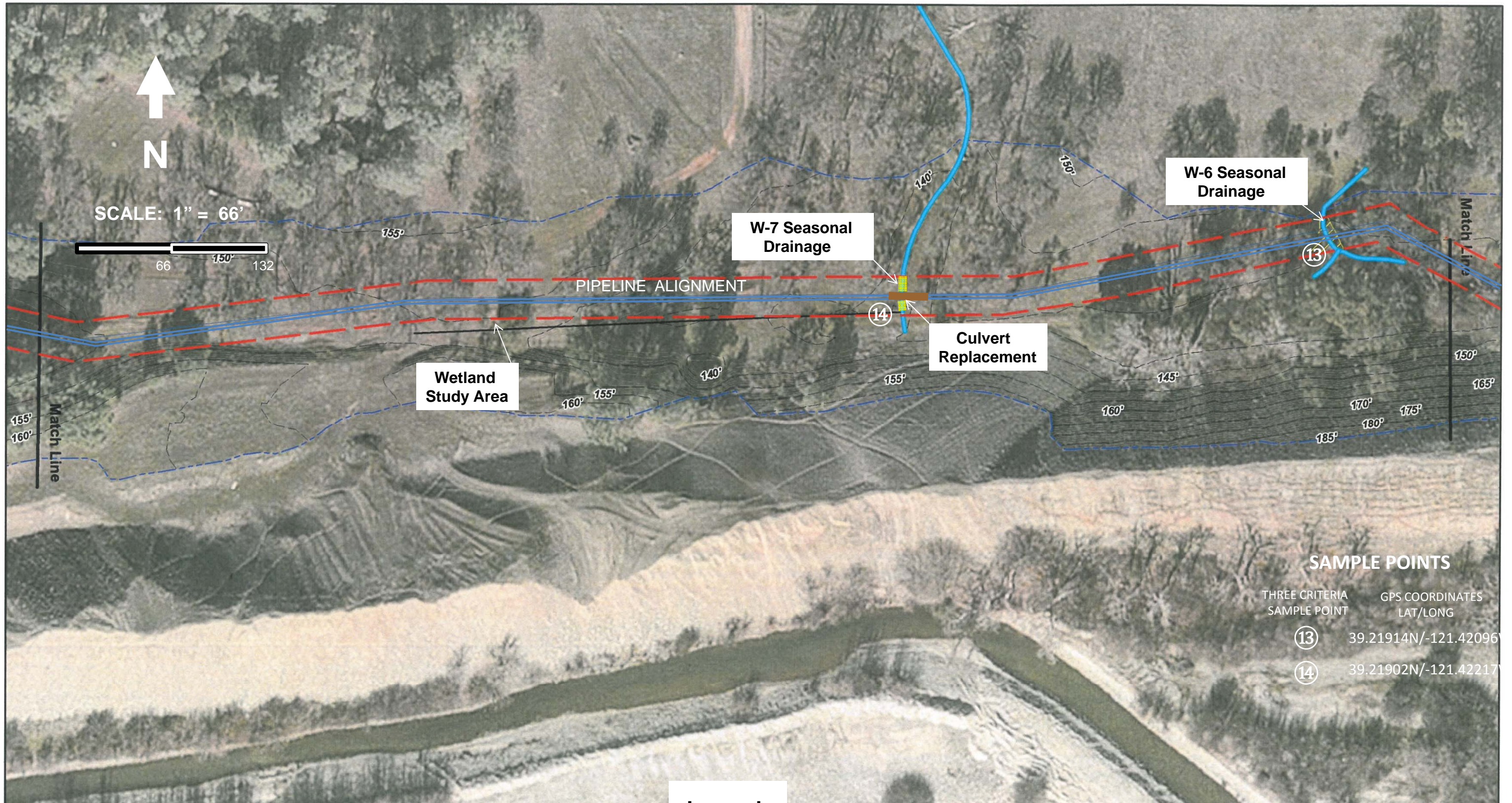


WATERS OF U.S. / IMPACTS
None on this display

Legend
USACE Wetland Impact Map
Dry Creek Recapture Project

Conducted By: **MARCUS H. BOLE & ASSOCIATES**, PHONE: 530-633-0117
Property located within Sections 21, 22, 28, and 29; T 16N, R 5E, Mt Diablo BM.
March 12, 2013

- CONSTRUCTION CORRIDOR 30 FEET IN WIDTH 
- DELINEATED WOUS 
- SWALE/DRAINAGE 






SAMPLE POINTS

THREE CRITERIA SAMPLE POINT	GPS COORDINATES LAT/LONG
13	39.21914N/-121.42096
14	39.21902N/-121.42217

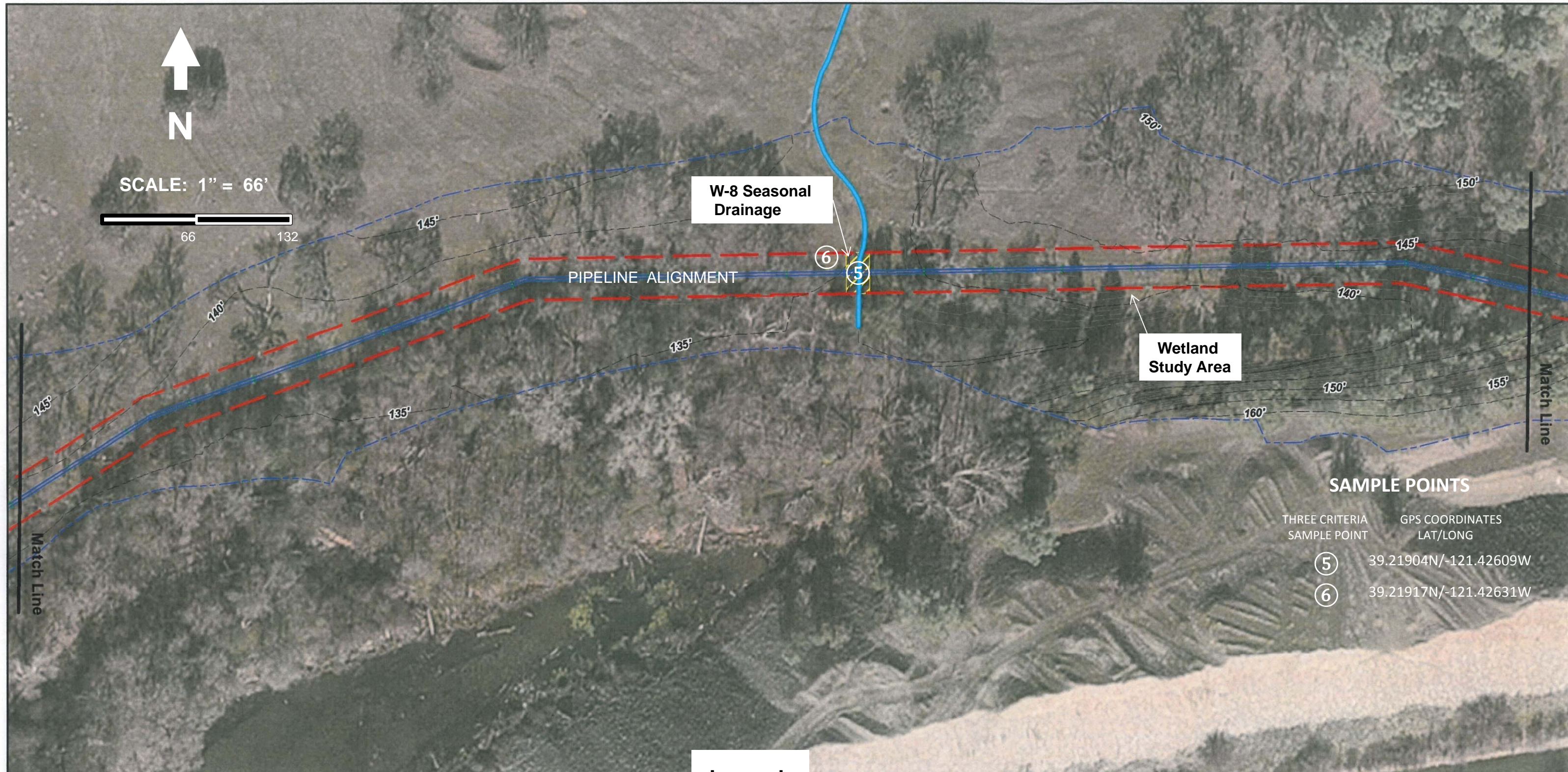
Legend

**USACE Wetland Impact Map
Dry Creek Recapture Project**

Conducted By: **MARCUS H. BOLE & ASSOCIATES**, PHONE: 530-633-0117
 Property located within Sections 21, 22, 28, and 29; T 16N, R 5E, Mt Diablo BM.
 March 12, 2013

- CONSTRUCTION CORRIDOR 30 FEET IN WIDTH 
- DELINEATED WOUS 
- SWALE/DRAINAGE 

WATERS OF U.S. / TEMPORARY IMPACTS
 W-6 (Data Point 13): Seasonal Drainage – 0.004 acres
 Temporary Impacts at W-6: 0.0004 acres
 W-7 (Data Point 14): Seasonal Drainage – 0.012 acres
 Temporary Impacts at W-1: 0.001 acres



SAMPLE POINTS




THREE CRITERIA SAMPLE POINT	GPS COORDINATES LAT/LONG
⑤	39.21904N/-121.42609W
⑥	39.21917N/-121.42631W

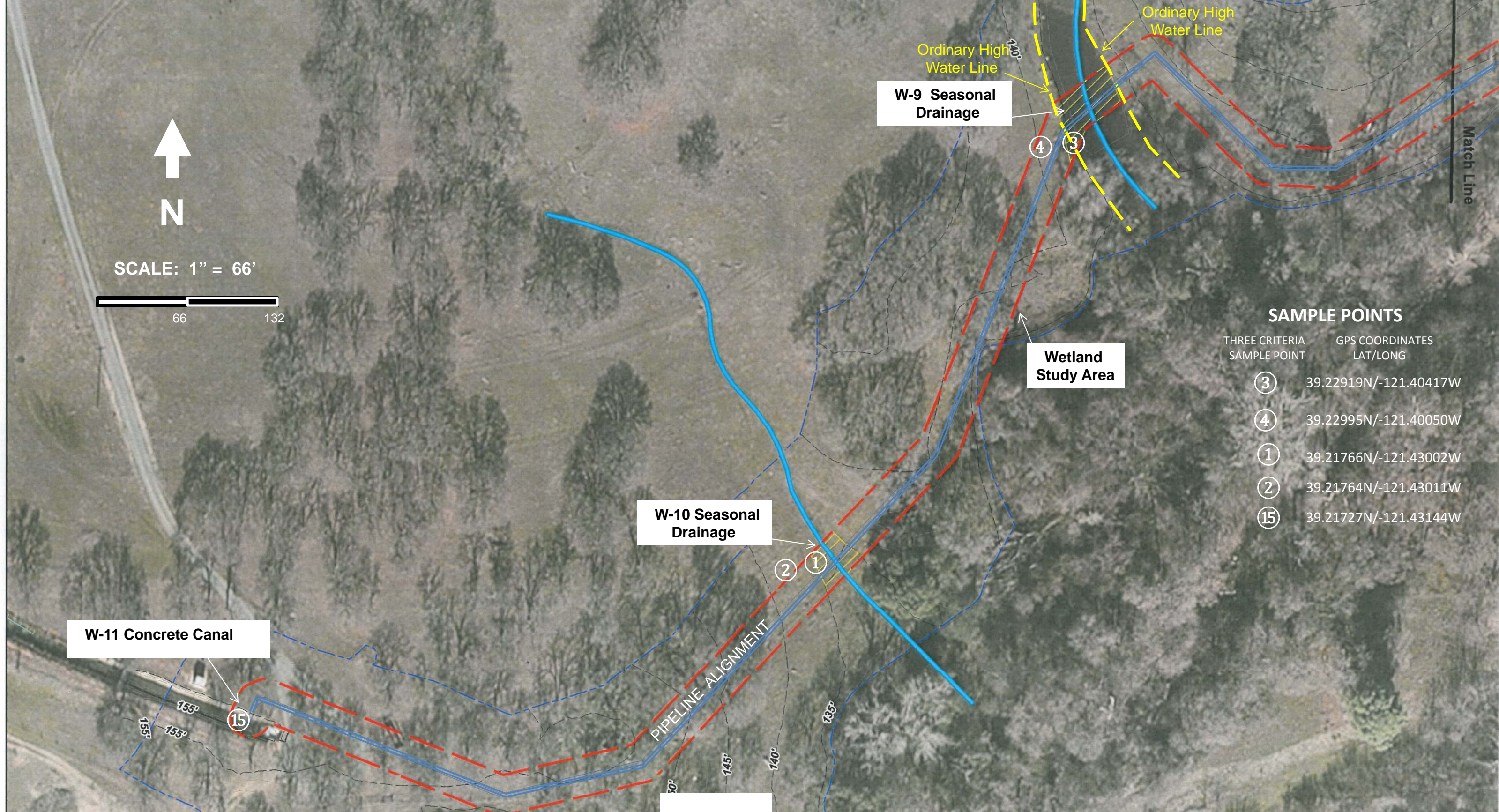
Legend

WATERS OF U.S. / TEMPORARY IMPACTS
 W-8 (Data Point 5): Seasonal Drainage – 0.012 acres
 Temporary Impacts at W-8: 0.0012 acres

USACE Wetland Impact Map
Dry Creek Recapture Project

Conducted By: **MARCUS H. BOLE & ASSOCIATES**, PHONE: 530-633-0117
 Property located within Sections 21, 22, 28, and 29; T 16N, R 5E, Mt Diablo BM.
 March 12, 2013

CONSTRUCTION CORRIDOR 30 FEET IN WIDTH 
 DELINEATED WOUS 
 SWALE/DRAINAGE 



SAMPLE POINTS



THREE CRITERIA SAMPLE POINT	GPS COORDINATES LAT/LONG
③	39.22919N/-121.40417W
④	39.22995N/-121.40050W
①	39.21766N/-121.43002W
②	39.21764N/-121.43011W
⑮	39.21727N/-121.43144W

Legend

WATERS OF U.S. / TEMPORARY IMPACTS
 W-9 (Data Point 3): Seasonal Drainage – 0.03 acres
 Temporary Impacts at W-9: 0.003 acres
 W-10 (Data Point 1): Seasonal Drainage – 0.02 acres
 Temporary Impacts at W-10: 0.002 acres
 W-11 (Data Point 15): 0.001 acres (Canal)
 Temporary Impacts at W-11: 0.001 acres

**USACE Wetland Impact Map
 Dry Creek Recapture Project**

Conducted By: **MARCUS H. BOLE & ASSOCIATES**, PHONE: 530-633-0117
 Property located within Sections 21, 22, 28, and 29; T 16N, R 5E, Mt Diablo BM.
 March 12, 2013

CONSTRUCTION CORRIDOR
 30 FEET IN WIDTH 
 DELINEATED WOUS 
 SWALE/DRAINAGE 