

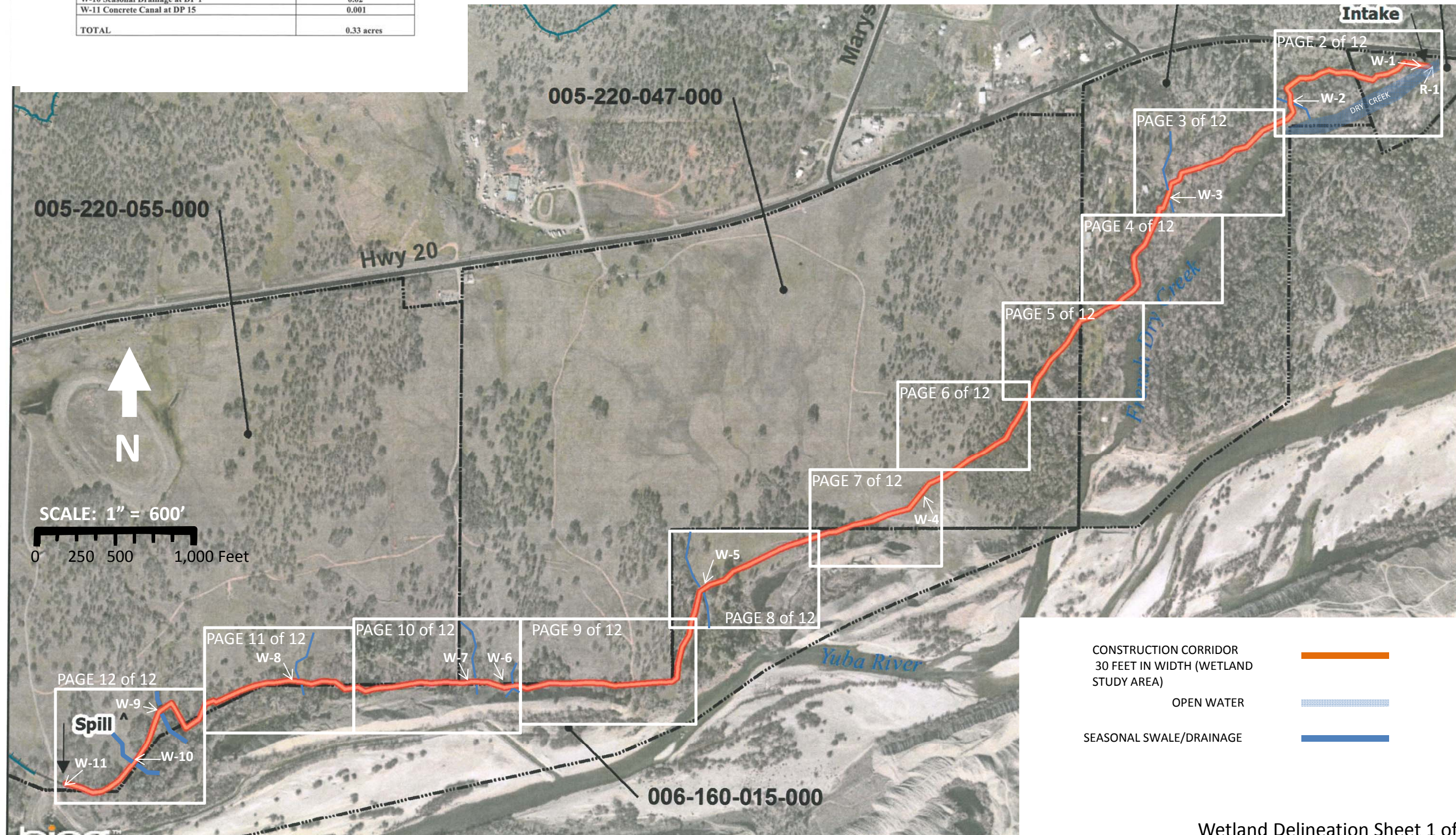
LEGEND

Waters of the United States (WOUS)	WOUS Size in Acres In WSA
R-1 Dry Creek Bed - Concrete Pad for Cone Screen (Open Water)	0.09
W-1 Dry Creek (DP 11) (emergent wetland)	0.11
W-2 Culvert replacement at DP 10 (Seasonal Drainage)	0.003
W-3 Seasonal Creek (DP 9)	0.03
W-4 Seasonal Emergent Wetland at DP 12	0.005
W-5 Seasonal Drainage at Data Point 7	0.02
W-6 Seasonal Drainage at DP 13	0.004
W-7 Culvert replacement at DP 14 (Seasonal Drainage)	0.012
W-8 Seasonal Drainage at DP 5	0.012
W-9 Seasonal Drainage at DP 3	0.03
W-10 Seasonal Drainage at DP 1	0.02
W-11 Concrete Canal at DP 15	0.001
TOTAL	0.33 acres

USACE Wetland Delineation Map Dry Creek Recapture Project

Conducted By: **MARCUS H. BOLE & ASSOCIATES,**
PHONE: 530-633-0117, Property located within Sections 21,
22, 28, and 29; T 16N, R 5E, Mt Diablo BM.

March 12, 2013





SAMPLE POINTS

THREE CRITERIA SAMPLE POINT	GPS COORDINATES LAT/LONG
⑩	39.22929N/-121.40350W
⑪	39.22995N/-121.40050W

WATERS OF U.S. / TEMPORARY IMPACTS
W-2 (Data Point 10): Seasonal Drainage – 0.003 acres
W-1 (Data Point 11): Emergent Wetlands – 0.11 acres


WATERS OF U.S. / PERMANENT IMPACTS
R-1 : 0.09 acres (Open Water)


Legend


USACE Wetland Delineation Map

Dry Creek Recapture Project

Conducted By: **MARCUS H. BOLE & ASSOCIATES,**
PHONE: 530-633-0117, Property located within Sections 21,
22, 28, and 29; T 16N, R 5E, Mt Diablo BM.
March 12, 2013

CONSTRUCTION CORRIDOR
30 FEET IN WIDTH
(WETLAND STUDY AREA) 

DELINEATED WOUS
OPEN WATER 

SEASONAL SWALE/DRAINAGE 



SCALE: 1" = 66'

66 132

W-3 Seasonal Creek (with emergent wetlands)

Wetland Study Area




SAMPLE POINTS

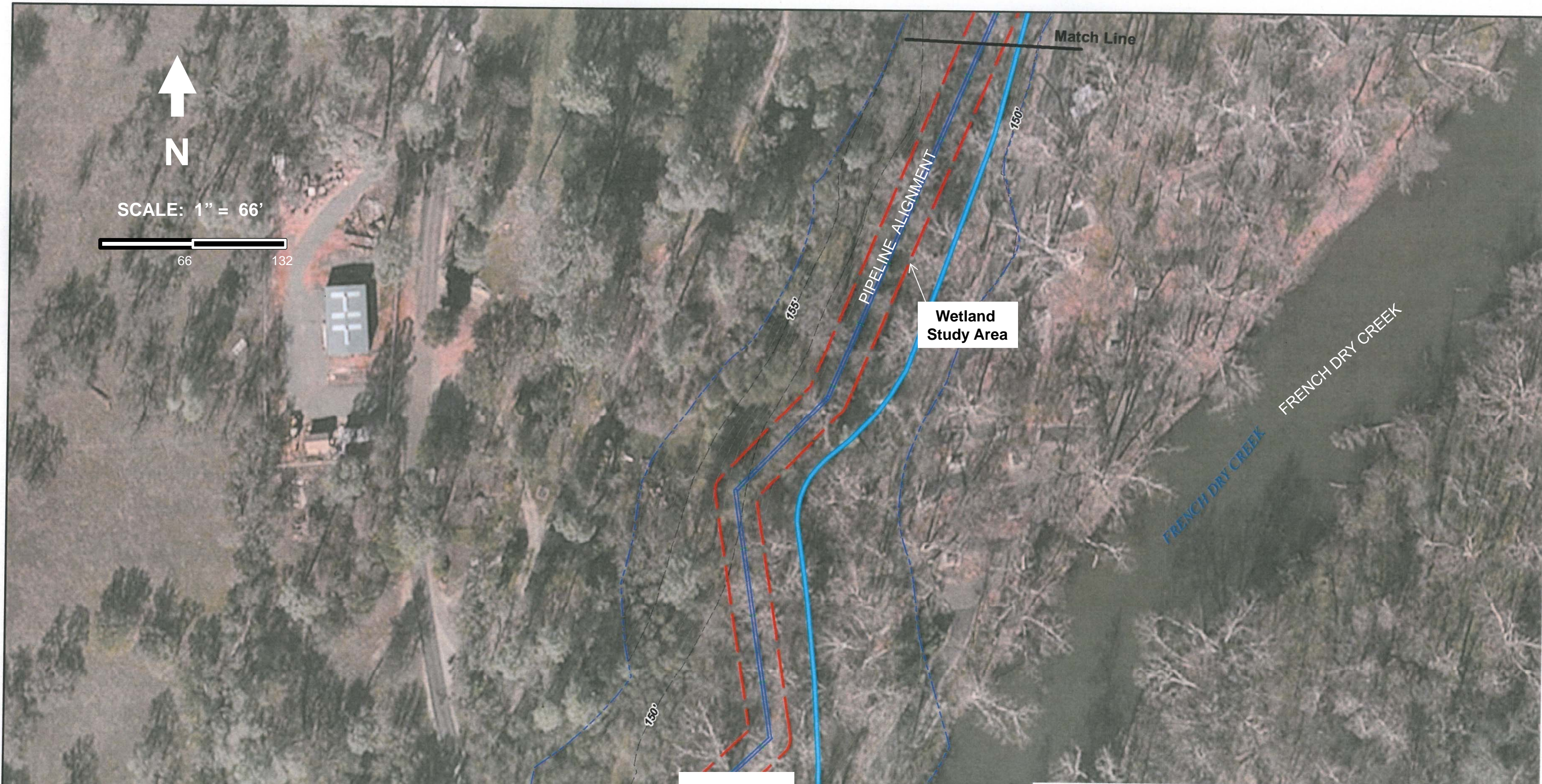
THREE CRITERIA SAMPLE POINT	GPS COORDINATES LAT/LONG
9	39.22772N/-121.40632W

WATERS OF U.S. / TEMPORARY IMPACTS
 W-3 (Data Point 9): Seasonal Creek – 0.03 acres

Legend
USACE Wetland Delineation Map
Dry Creek Recapture Project

Conducted By: **MARCUS H. BOLE & ASSOCIATES**, PHONE: 530-633-0117
 Property located within Sections 21, 22, 28, and 29; T 16N, R 5E, Mt Diablo BM.
 March 12, 2013




- CONSTRUCTION CORRIDOR 30 FEET IN WIDTH 
- DELINEATED WOUS 
- SWALE/DRAINAGE 

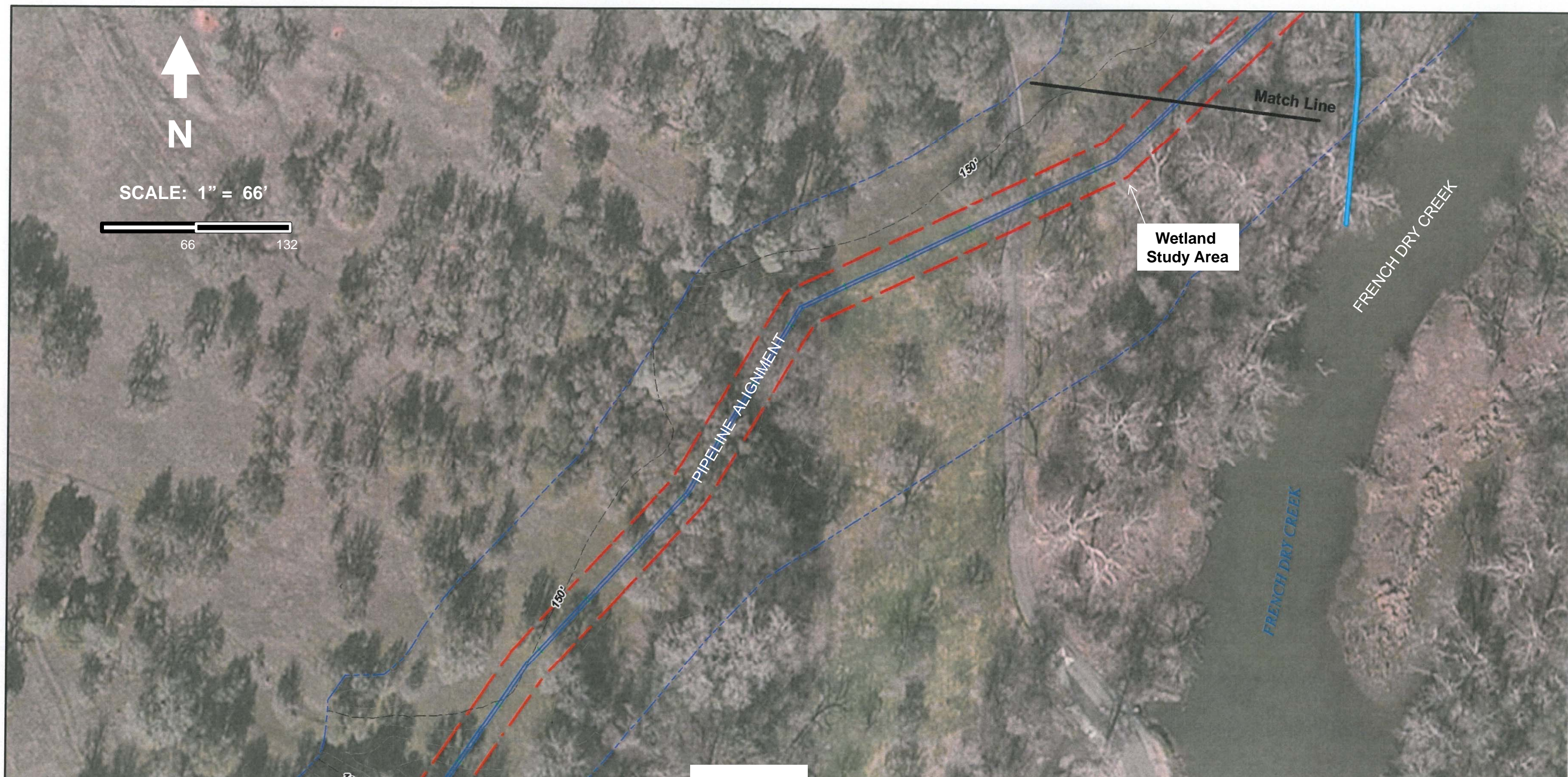


WATERS OF U.S. / IMPACTS
None on this display

Legend
USACE Wetland Delineation Map
Dry Creek Recapture Project

Conducted By: **MARCUS H. BOLE & ASSOCIATES**, PHONE: 530-633-0117
Property located within Sections 21, 22, 28, and 29; T 16N, R 5E, Mt Diablo BM.
March 12, 2013




CONSTRUCTION CORRIDOR 30 FEET IN WIDTH 
DELINEATED WOUS 
SWALE/DRAINAGE 

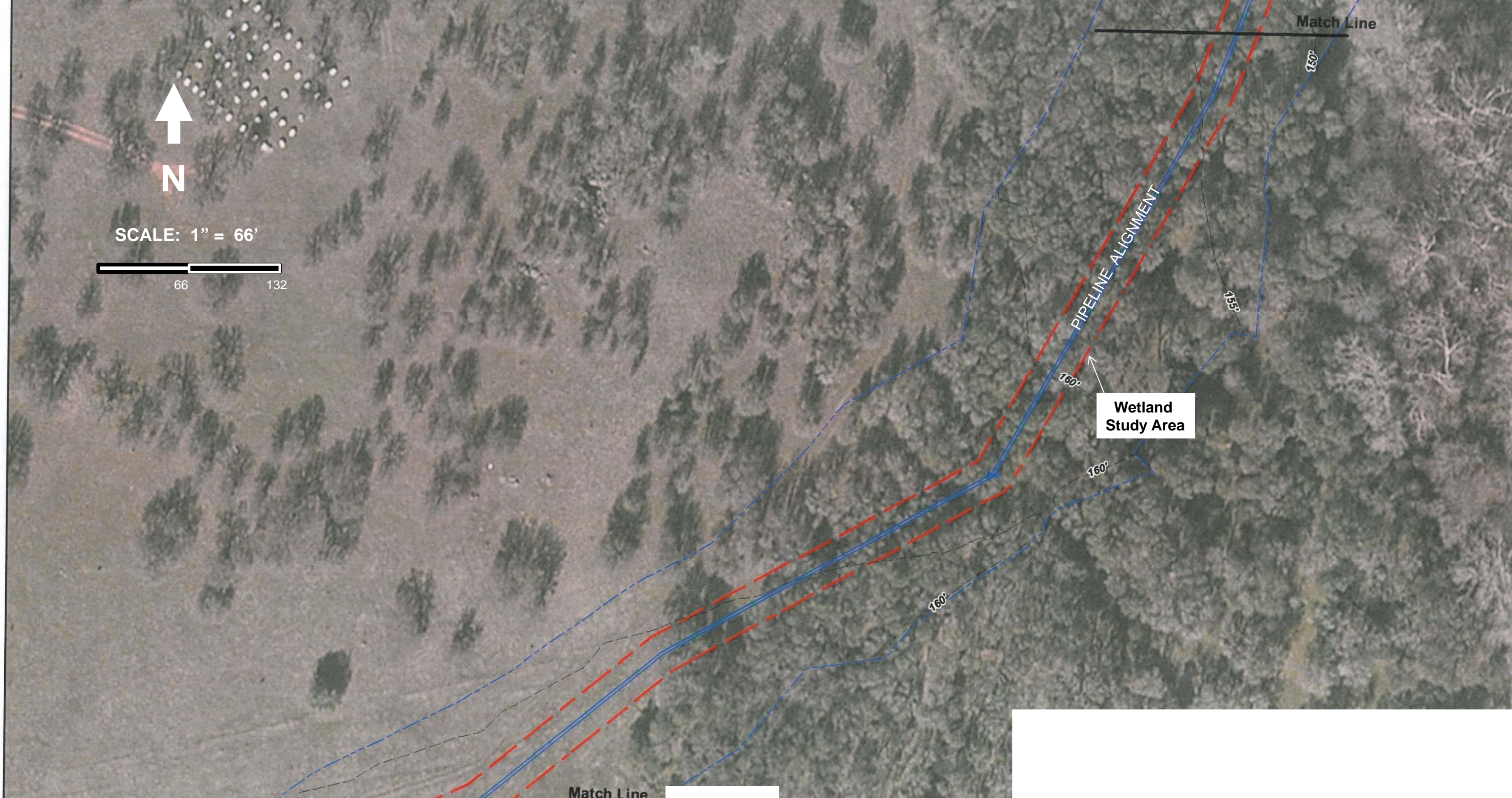


WATERS OF U.S. / IMPACTS
None on this display

Legend
USACE Wetland Delineation Map
Dry Creek Recapture Project

Conducted By: **MARCUS H. BOLE & ASSOCIATES**, PHONE: 530-633-0117
Property located within Sections 21, 22, 28, and 29; T 16N, R 5E, Mt Diablo BM.
March 12, 2013




- CONSTRUCTION CORRIDOR 30 FEET IN WIDTH 
- DELINEATED WOUS 
- SWALE/DRAINAGE 

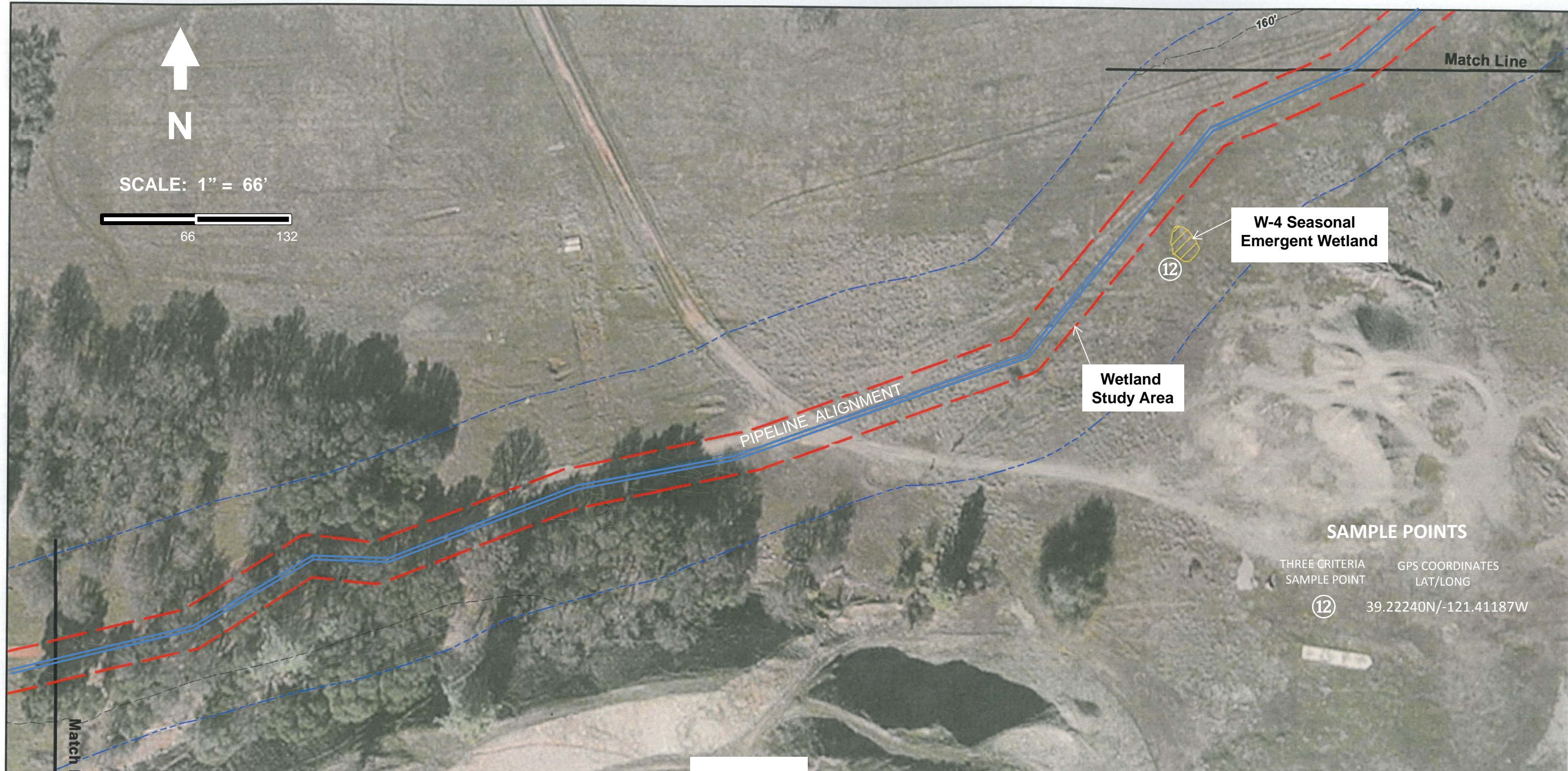


WATERS OF U.S. / IMPACTS
None on this display

Legend
USACE Wetland Delineation Map
Dry Creek Recapture Project

Conducted By: **MARCUS H. BOLE & ASSOCIATES**, PHONE: 530-633-0117
Property located within Sections 21, 22, 28, and 29; T 16N, R 5E, Mt Diablo BM.
March 12, 2013

- CONSTRUCTION CORRIDOR 30 FEET IN WIDTH 
- DELINEATED WOUS 
- SWALE/DRAINAGE 






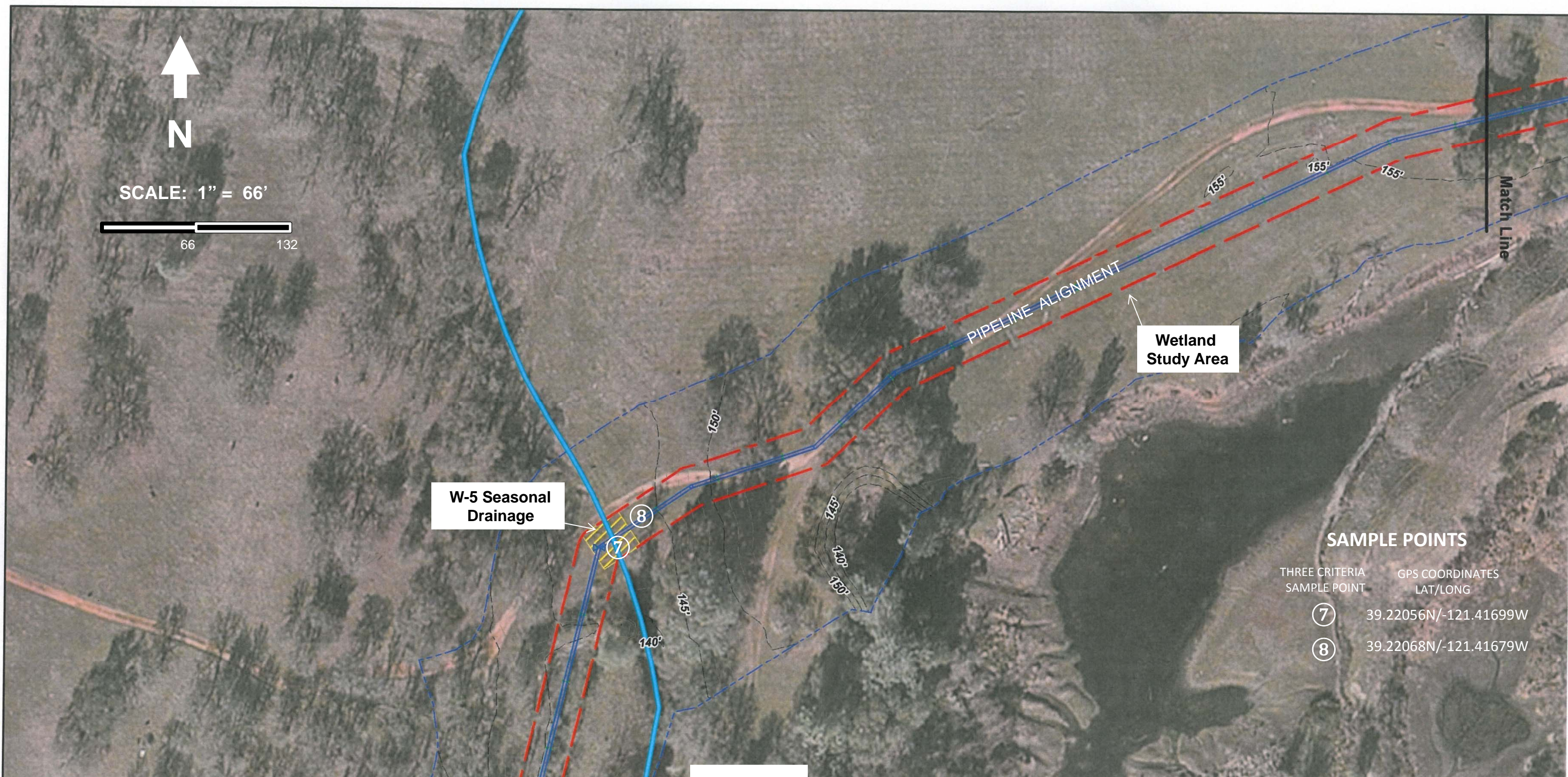
SAMPLE POINTS

THREE CRITERIA SAMPLE POINT	GPS COORDINATES LAT/LONG
⑫	39.22240N/-121.41187W

WATERS OF U.S. / IMPACTS
 W-4 (Data Point 12): Seasonal Emergent Wetland – 0.005 acres

Legend
USACE Wetland Delineation Map
Dry Creek Recapture Project
 Conducted By: **MARCUS H. BOLE & ASSOCIATES**, PHONE: 530-633-0117
 Property located within Sections 21, 22, 28, and 29; T 16N, R 5E, Mt Diablo BM.
 March 12, 2013

CONSTRUCTION CORRIDOR 30 FEET IN WIDTH 
 DELINEATED WOUS 
 SWALE/DRAINAGE 






SAMPLE POINTS

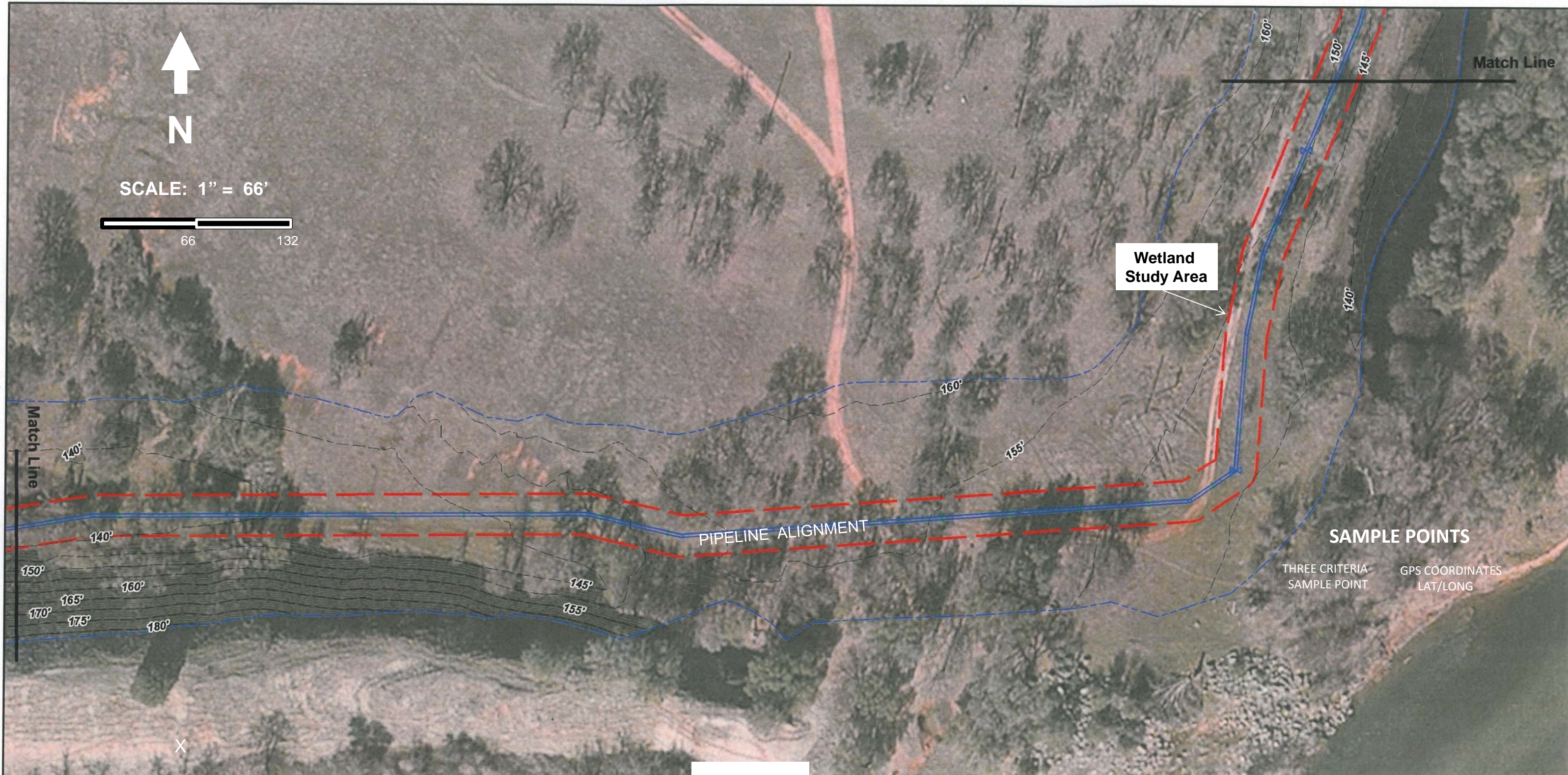
THREE CRITERIA SAMPLE POINT	GPS COORDINATES LAT/LONG
7	39.22056N/-121.41699W
8	39.22068N/-121.41679W

WATERS OF U.S. / TEMPORARY IMPACTS
 W-5 (Data Point 7): Seasonal Drainage – 0.02 acres

Legend
USACE Wetland Delineation Map
Dry Creek Recapture Project

Conducted By: **MARCUS H. BOLE & ASSOCIATES**, PHONE: 530-633-0117
 Property located within Sections 21, 22, 28, and 29; T 16N, R 5E, Mt Diablo BM.
 March 12, 2013




CONSTRUCTION CORRIDOR
 30 FEET IN WIDTH 
 DELINEATED WOUS 
 SWALE/DRAINAGE 

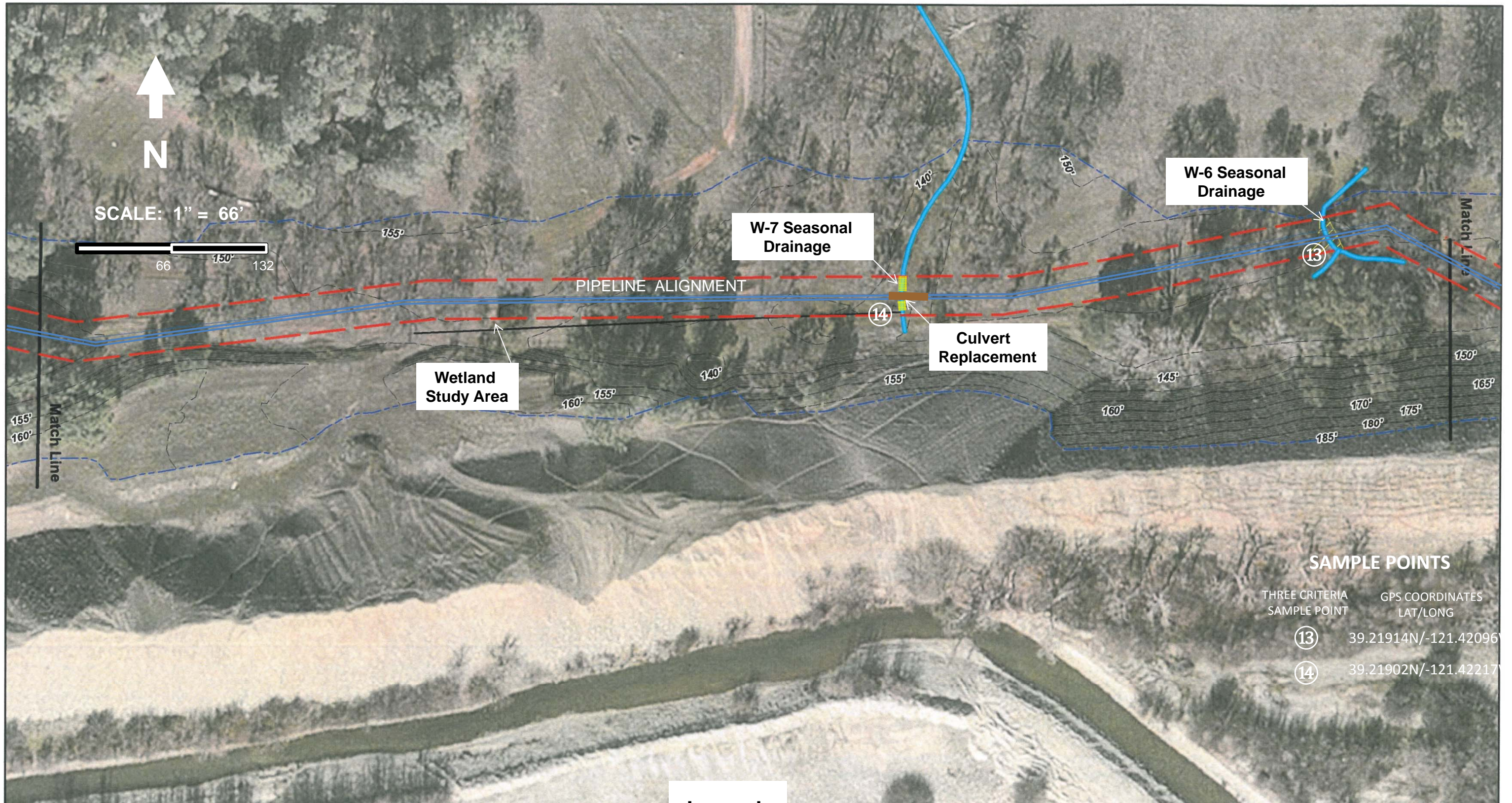


WATERS OF U.S. / IMPACTS
None on this display

Legend
USACE Wetland Delineation Map
Dry Creek Recapture Project

Conducted By: **MARCUS H. BOLE & ASSOCIATES**, PHONE: 530-633-0117
Property located within Sections 21, 22, 28, and 29; T 16N, R 5E, Mt Diablo BM.
March 12, 2013

- CONSTRUCTION CORRIDOR 30 FEET IN WIDTH 
- DELINEATED WOUS 
- SWALE/DRAINAGE 






SAMPLE POINTS

THREE CRITERIA SAMPLE POINT	GPS COORDINATES LAT/LONG
13	39.21914N/-121.42096
14	39.21902N/-121.42217

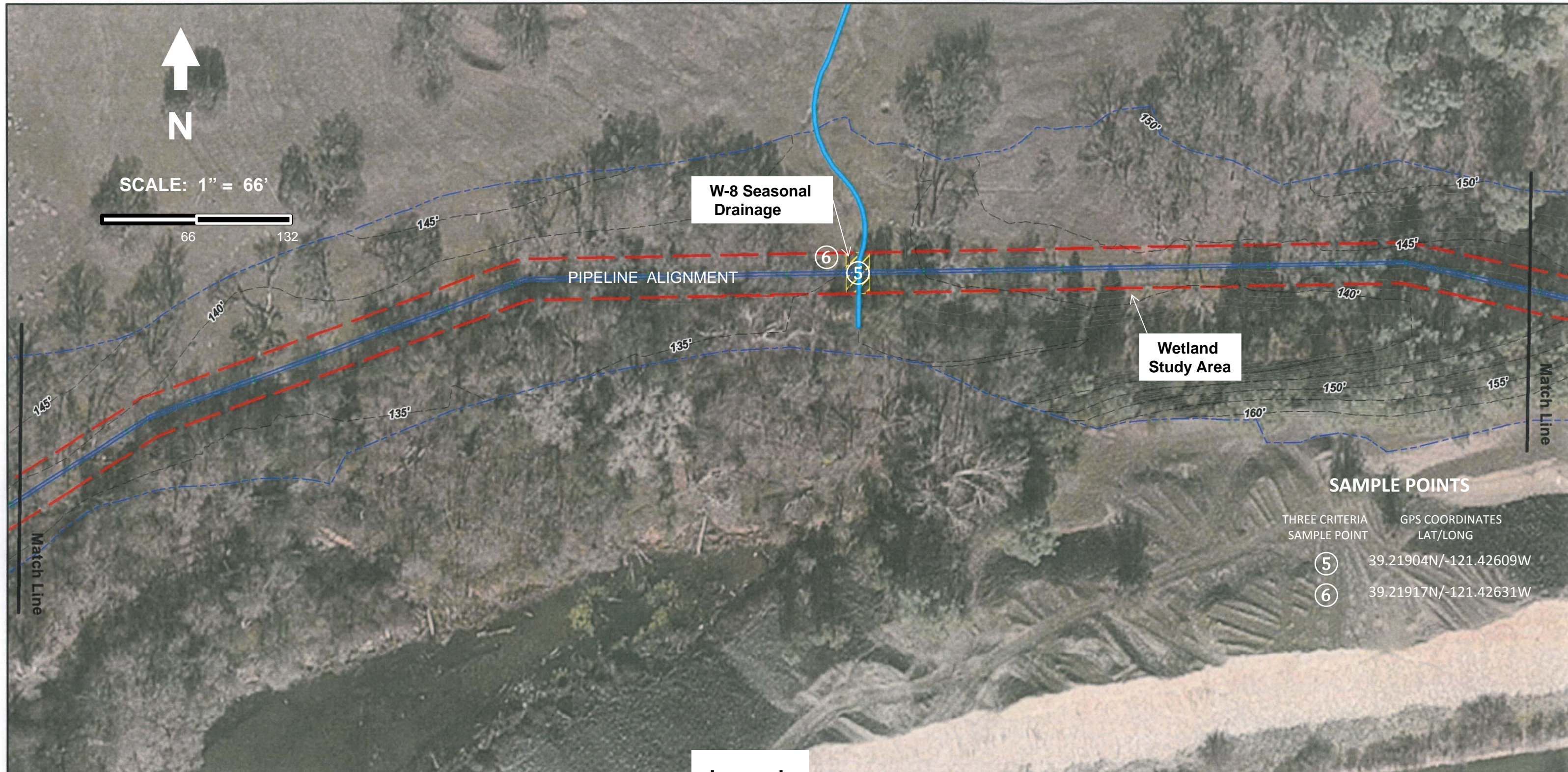
Legend

**USACE Wetland Delineation Map
Dry Creek Recapture Project**

Conducted By: **MARCUS H. BOLE & ASSOCIATES**, PHONE: 530-633-0117
 Property located within Sections 21, 22, 28, and 29; T 16N, R 5E, Mt Diablo BM.
 March 12, 2013

- CONSTRUCTION CORRIDOR 30 FEET IN WIDTH 
- DELINEATED WOUS 
- SWALE/DRAINAGE 

WATERS OF U.S. / TEMPORARY IMPACTS
 W-6 (Data Point 13): Seasonal Drainage – 0.004 acres
 W-7 (Data Point 14): Seasonal Drainage – 0.012 acres



SAMPLE POINTS




THREE CRITERIA SAMPLE POINT	GPS COORDINATES LAT/LONG
⑤	39.21904N/-121.42609W
⑥	39.21917N/-121.42631W

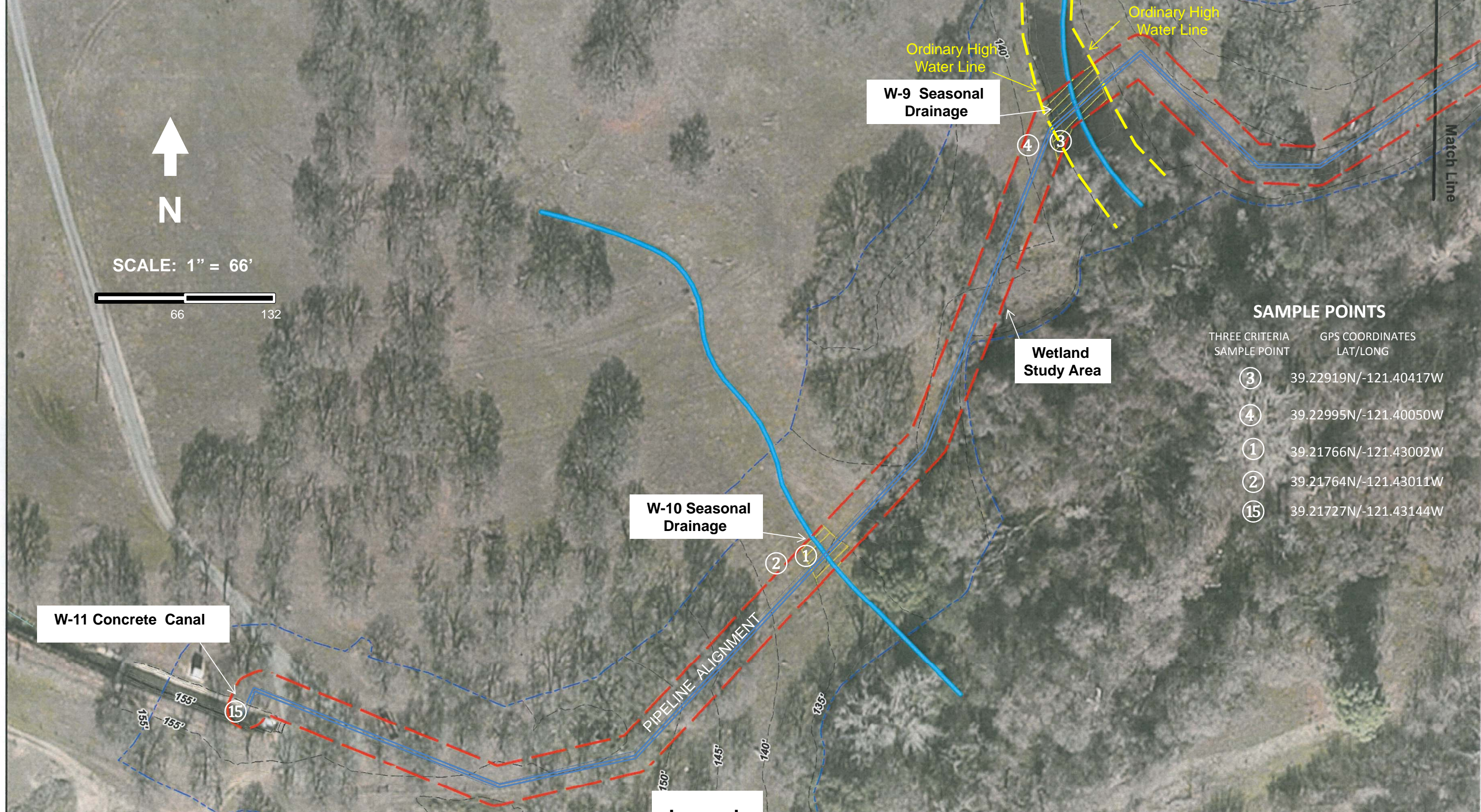
Legend

WATERS OF U.S. / TEMPORARY IMPACTS
 W-8 (Data Point 5): Seasonal Drainage – 0.012 acres

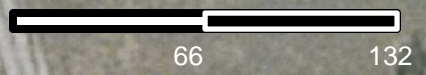
USACE Wetland Delineation Map
Dry Creek Recapture Project

Conducted By: **MARCUS H. BOLE & ASSOCIATES**, PHONE: 530-633-0117
 Property located within Sections 21, 22, 28, and 29; T 16N, R 5E, Mt Diablo BM.
 March 12, 2013

- CONSTRUCTION CORRIDOR 30 FEET IN WIDTH 
- DELINEATED WOUS 
- SWALE/DRAINAGE 



SCALE: 1" = 66'



SAMPLE POINTS

THREE CRITERIA SAMPLE POINT	GPS COORDINATES LAT/LONG
③	39.22919N/-121.40417W
④	39.22995N/-121.40050W
①	39.21766N/-121.43002W
②	39.21764N/-121.43011W
⑮	39.21727N/-121.43144W

Legend

**USACE Wetland Delineation Map
Dry Creek Recapture Project**

Conducted By: **MARCUS H. BOLE & ASSOCIATES**, PHONE: 530-633-0117
 Property located within Sections 21, 22, 28, and 29; T 16N, R 5E, Mt Diablo BM.
 March 12, 2013

- CONSTRUCTION CORRIDOR 30 FEET IN WIDTH
- DELINEATED WOUS
- SWALE/DRAINAGE

WATERS OF U.S. / TEMPORARY IMPACTS
 W-9 (Data Point 3): Seasonal Drainage – 0.03 acres
 W-10 (Data Point 1): Seasonal Drainage – 0.02 acres
 W-11 (Data Point 15): 0.001 acres (Concrete Canal)